

# JVC

# SCHEMATIC DIAGRAMS

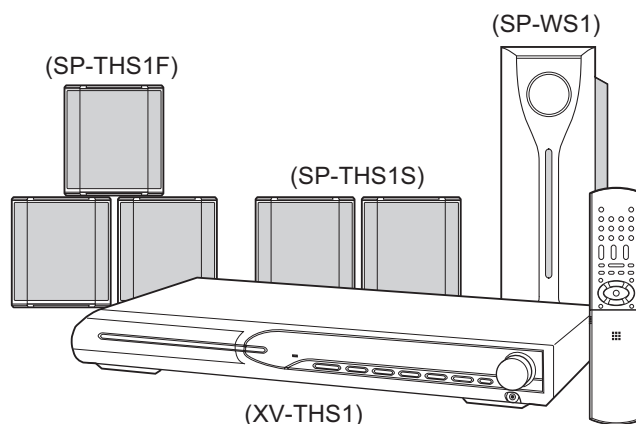
## DVD DIGITAL CINEMA SYSTEM

### TH-S1

CD-ROM No.SML200408

#### Area suffix

B ----- U.K.  
E ----- Continental Europe  
EN ----- Northern Europe  
EV ----- Eastern Europe  
EE ----- Russian Federation



#### Contents

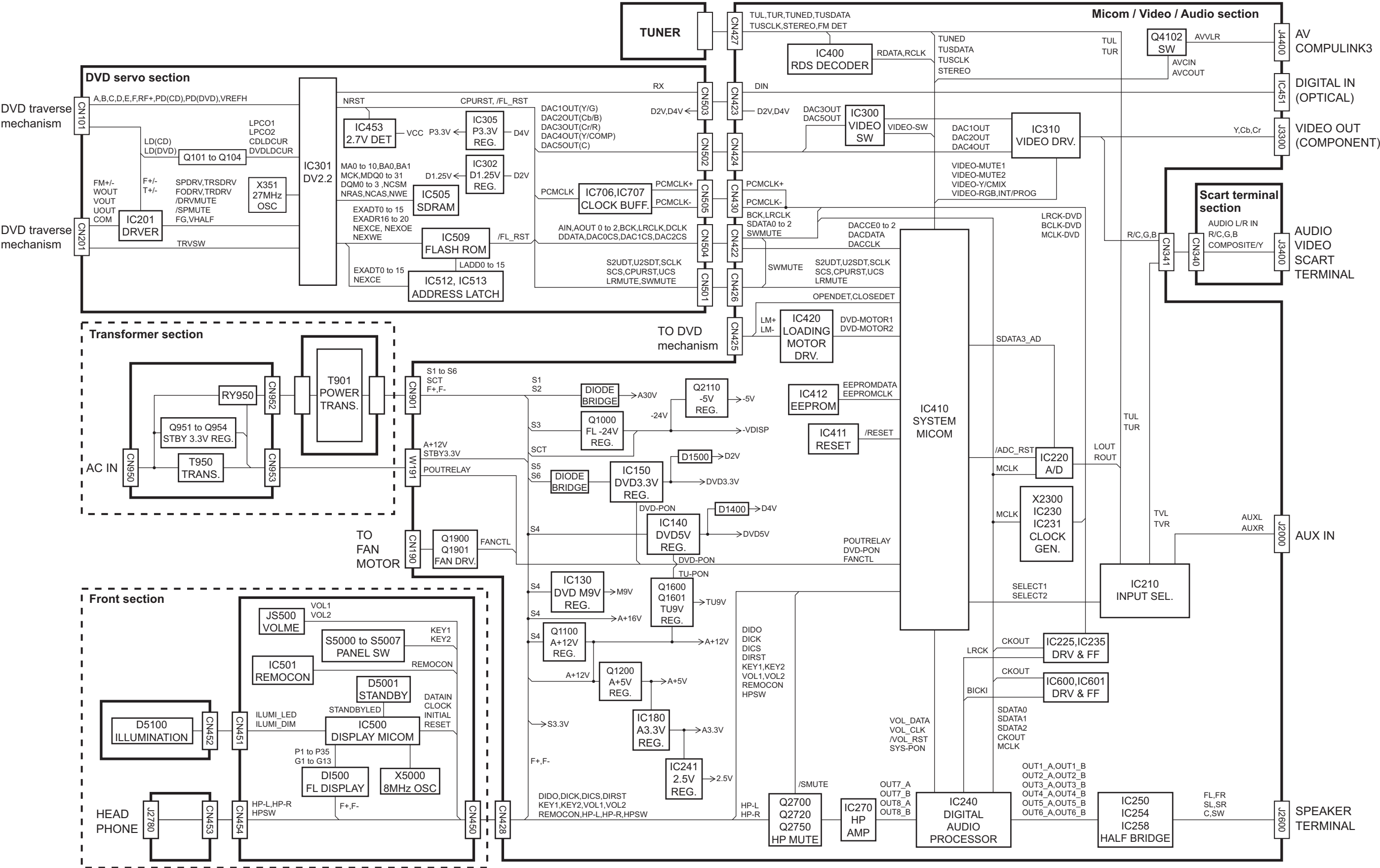
Block diagram .....	2-1
Standard schematic diagrams .....	2-2
Printed circuit boards .....	2-10 to 13



In regard with component parts appearing on the silk-screen printed side (parts side) of the PWB diagrams, the parts that are printed over with black such as the resistor (■), diode (▬) and ICP (●) or identified by the "A" mark nearby are critical for safety.



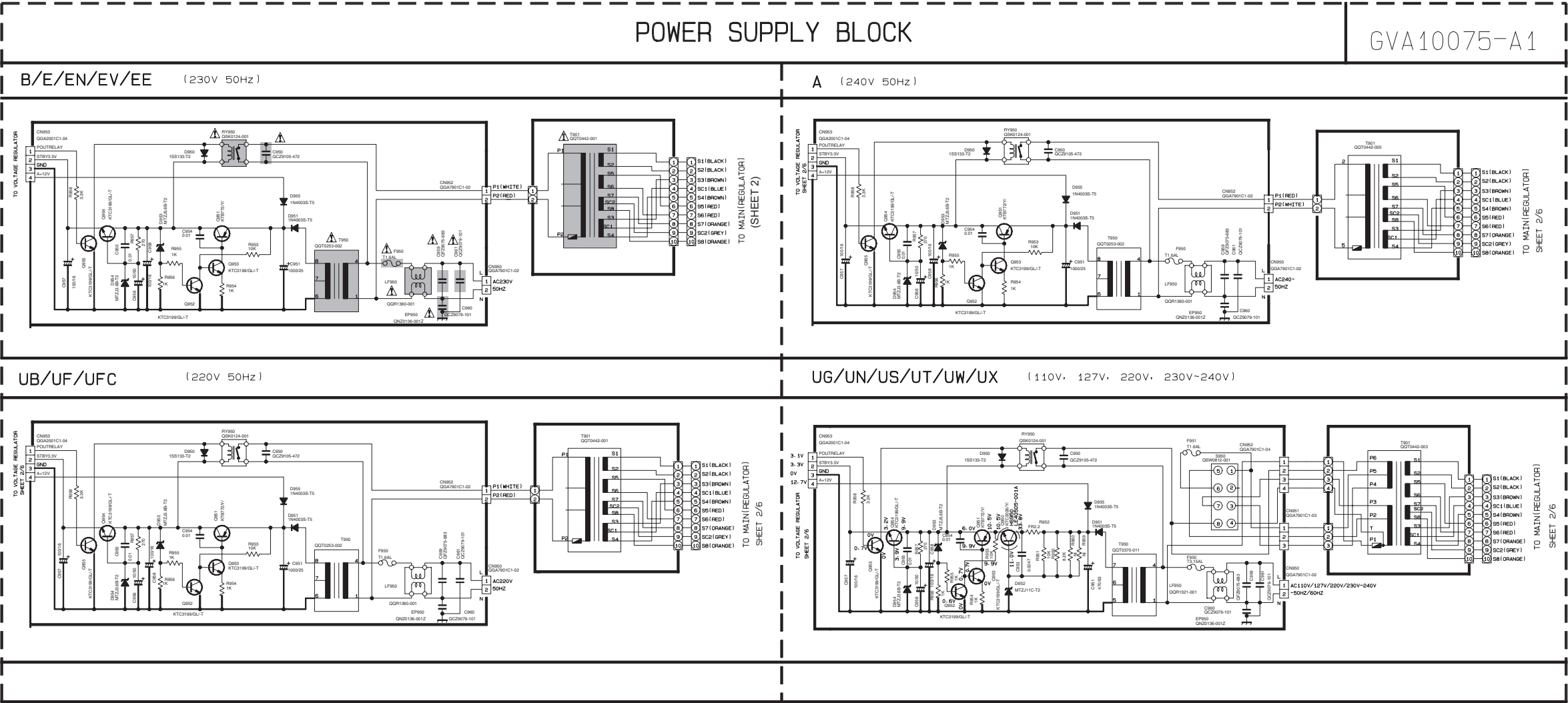
Block diagram





Standard schematic diagrams

Transformer section

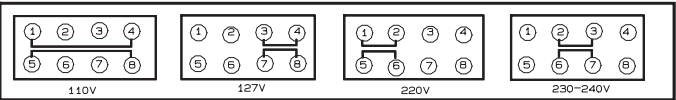


VERSION CODES

A : AUSTRALIA  
B : GREAT BRITAIN  
E : GERMANY/France/HOLLAND  
EE : RUSSIA  
EN : SWEDEN/NORWAY/FINLAND/DENMARK  
EV : EAST EUROPE  
UB : HONG KONG  
UF : CHINA  
UG : TURKEY/EGYPT/SOUTHAFRICA  
US : SINGAPORE  
UT : TAIWAN  
UN : BRAZIL/MEXICO/PERU  
UX : SAUDI ARABIA  
UY : ARGENTINA

Parts are safety assurance parts.  
When replacing those parts make  
sure to use the specified one.

VOLTAGE SELECTOR LOCATION

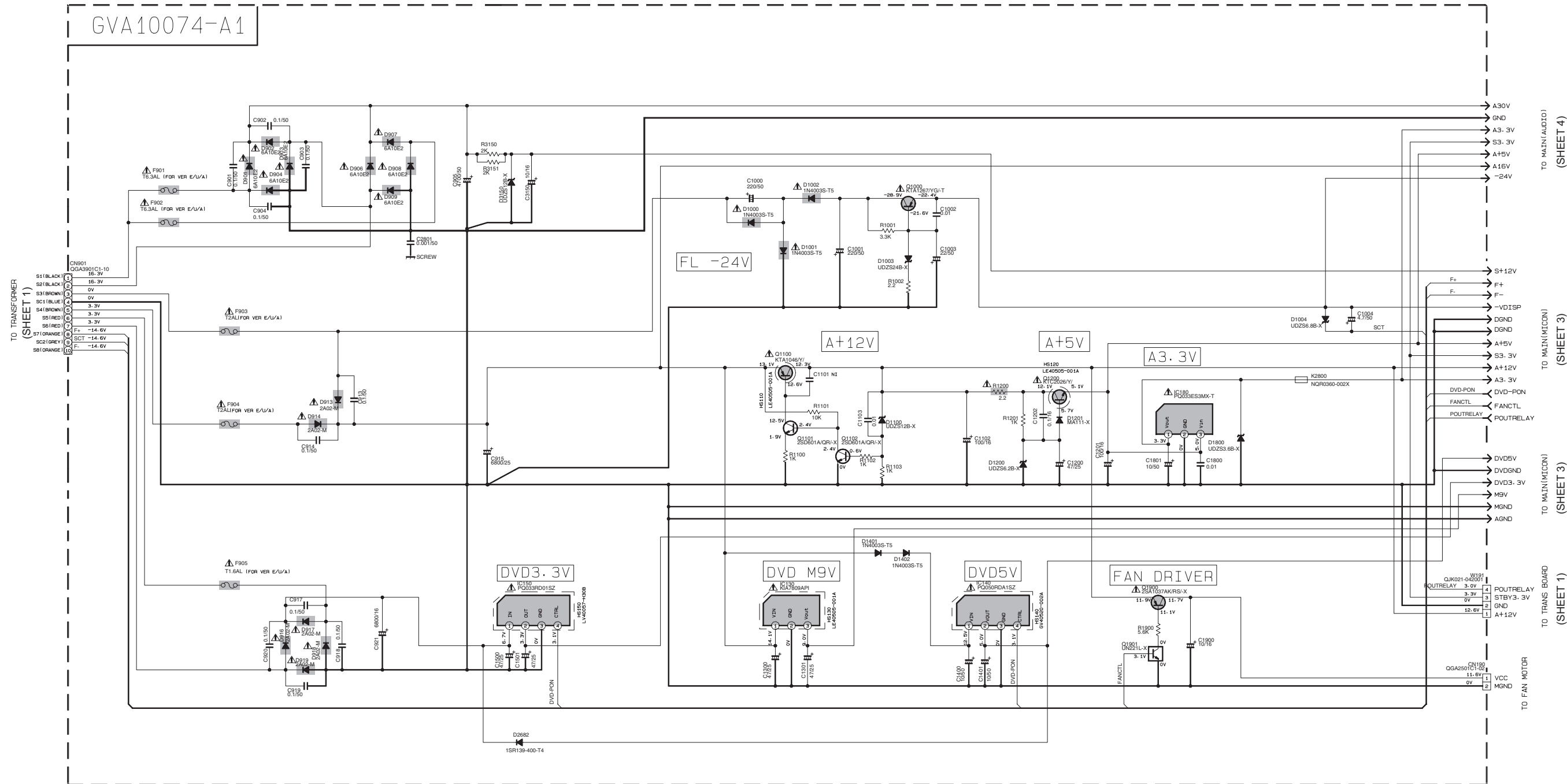


NOTES

- VOLTAGE ARE DC-MEASURED WITH A DIGITAL VOLT METER OR OSCILLOSCOPE WITHOUT INPUT SIGNAL.  
INSIDE BRACKET VALUES ARE OTHER FUNCTIONS.
- UNLESS OTHERWISE SPECIFIED:- RESISTOR ARE 1/4W ±5% CARBON RESISTOR  
ALL RESISTOR VALUES ARE IN OHM.  
ALL CAPACITOR ARE CERAMIC CAPACITOR OR MYLAR CAPACITOR.  
ALL CAPACITANCE VALUES ARE IN uF (µF).  
ALL INDUCTANCE VALUES ARE IN mH (mH).  
ALL E-CAPACITOR ARE SHOWN IN THE FORM OF CAPACITANCE (uF)/RATED VOLTAGE(V).
- FOR VERSION B/E/EN/EV/EE/UB/UF/UA/UY/UC/OM CIRCUIT VOLTAGE.  
PLEASE REFER TO UB/UA/UN/US/UT/UW/UX/ CIRCUIT VOLTAGE



■ Regulator section



NOTES

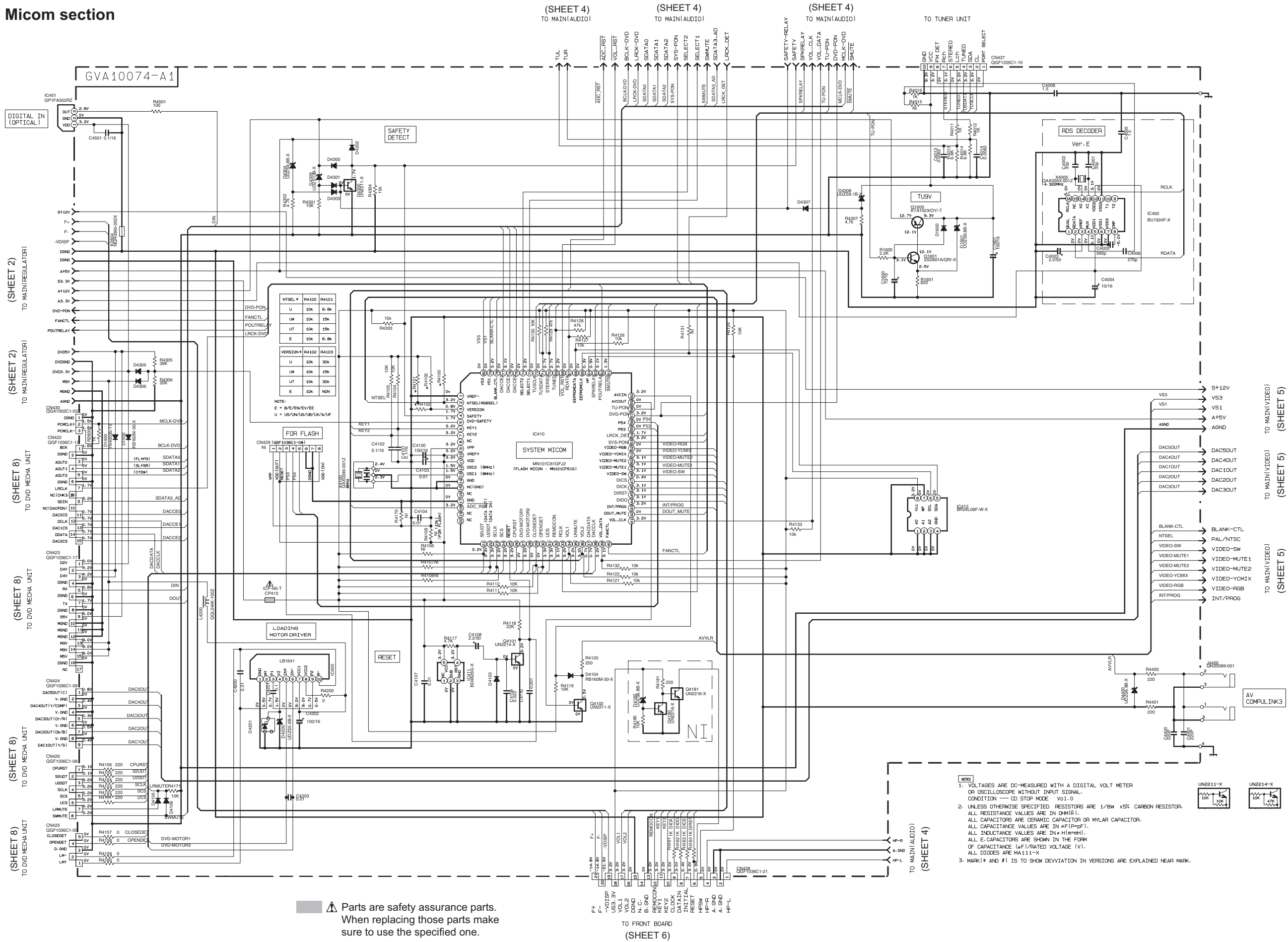
- VOLTAGES ARE DC-MEASURED WITH A DIGITAL VOLT METER OR OSCILLOSCOPE WITHOUT INPUT SIGNAL.  
CONDITION --- CD STOP MODE Vol.0
- UNLESS OTHERWISE SPECIFIED RESISTORS ARE 1/8W ±5% CARBON RESISTOR.  
ALL RESISTANCE VALUES ARE IN Ω(M|G).  
ALL CAPACITORS ARE CERAMIC CAPACITOR OR MYLAR CAPACITOR.  
ALL CAPACITANCE VALUES ARE IN #F(P|n|F).  
ALL INDUCTANCE VALUES ARE IN #H(m|H).  
ALL E. CAPACITORS ARE SHOWN IN THE FORM OF CAPACITANCE (μF)/RATED VOLTAGE (V).  
ALL DIODES ARE MA111-X
- MARK(\* AND #) IS TO SHOW DEVIATION IN VERSIONS ARE EXPLAINED NEAR MARK.


UN221L-X

Parts are safety assurance parts.  
When replacing those parts make  
sure to use the specified one.



## ■ Micom section



 Parts are safety assurance parts. When replacing those parts make sure to use the specified one.



# Audio section

(SHEET 5)  
TO MAIN(VIDEO)

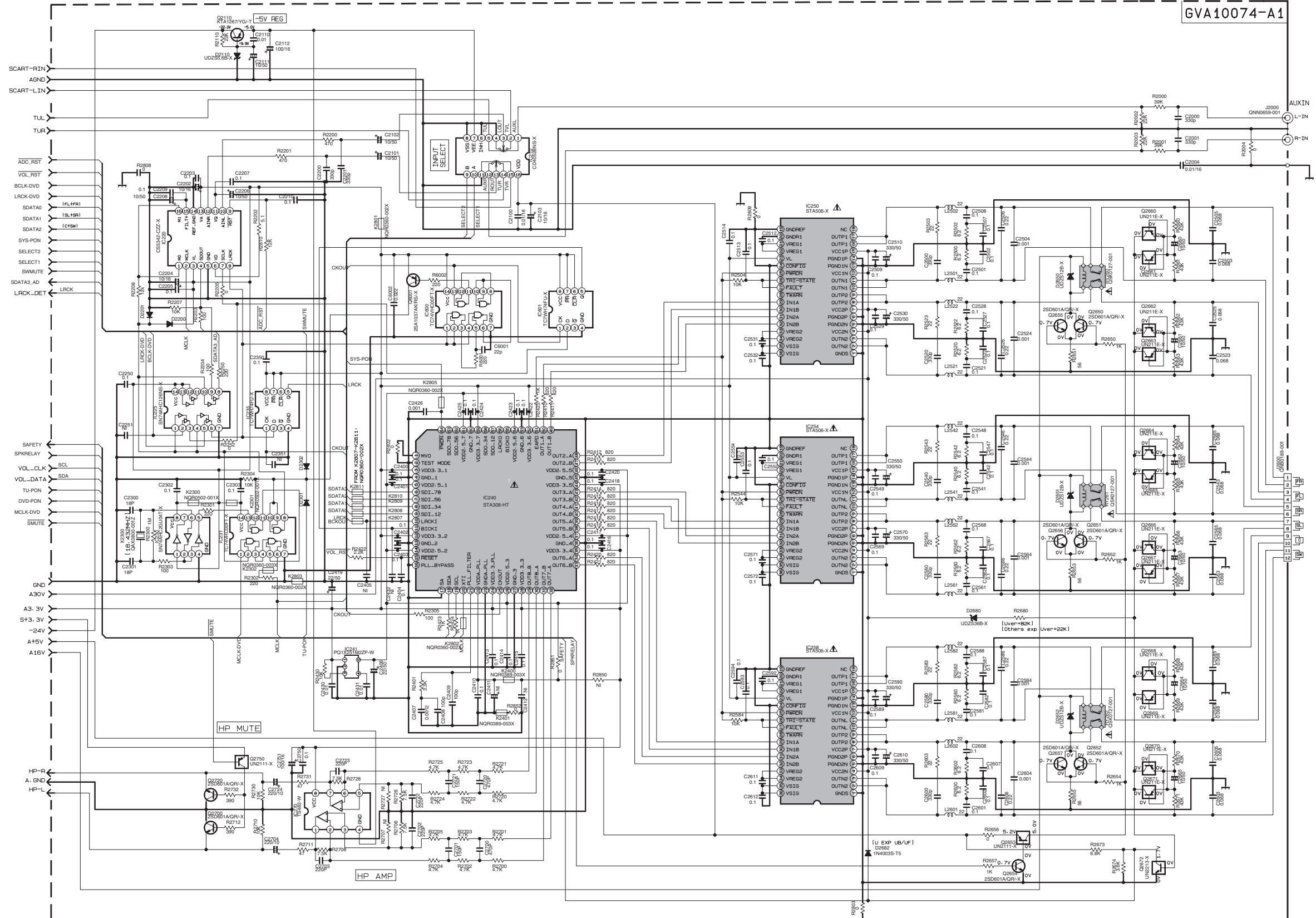
(SHEET 3)  
TO MAIN(VICON)

(SHEET 3)  
TO MAIN(VICON)

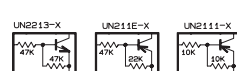
(SHEET 3)  
TO MAIN(VICON)

(SHEET 2)  
FROM REGULATOR

(SHEET 3)  
TO MAIN(VICON)



- NOTES
- VOLTAGES ARE DC-MEASURED WITH A DIGITAL VOLT METER OR OSCILLOSCOPE WITHOUT INPUT SIGNAL. CONDITION --- CD STOP MODE Vol.0
  - UNLESS OTHERWISE SPECIFIED, RESISTORS ARE 1/8W ±5% CARBON RESISTOR. ALL RESISTANCE VALUES ARE IN OHM(Ω). ALL CAPACITORS ARE CERAMIC CAPACITOR OR MYLAR CAPACITOR. ALL CAPACITANCE VALUES ARE IN nF(nF). ALL INDUCTANCE VALUES ARE IN mH(mH). ALL E CAPACITORS ARE SHOWN IN THE FORM OF CAPACITANCE (μF)/RATED VOLTAGE (V). ALL DIODES ARE MA111-X.
  - MARK(\* AND #) IS TO SHOW DEVIATION IN VERSIONS ARE EXPLAINED NEAR MARK.

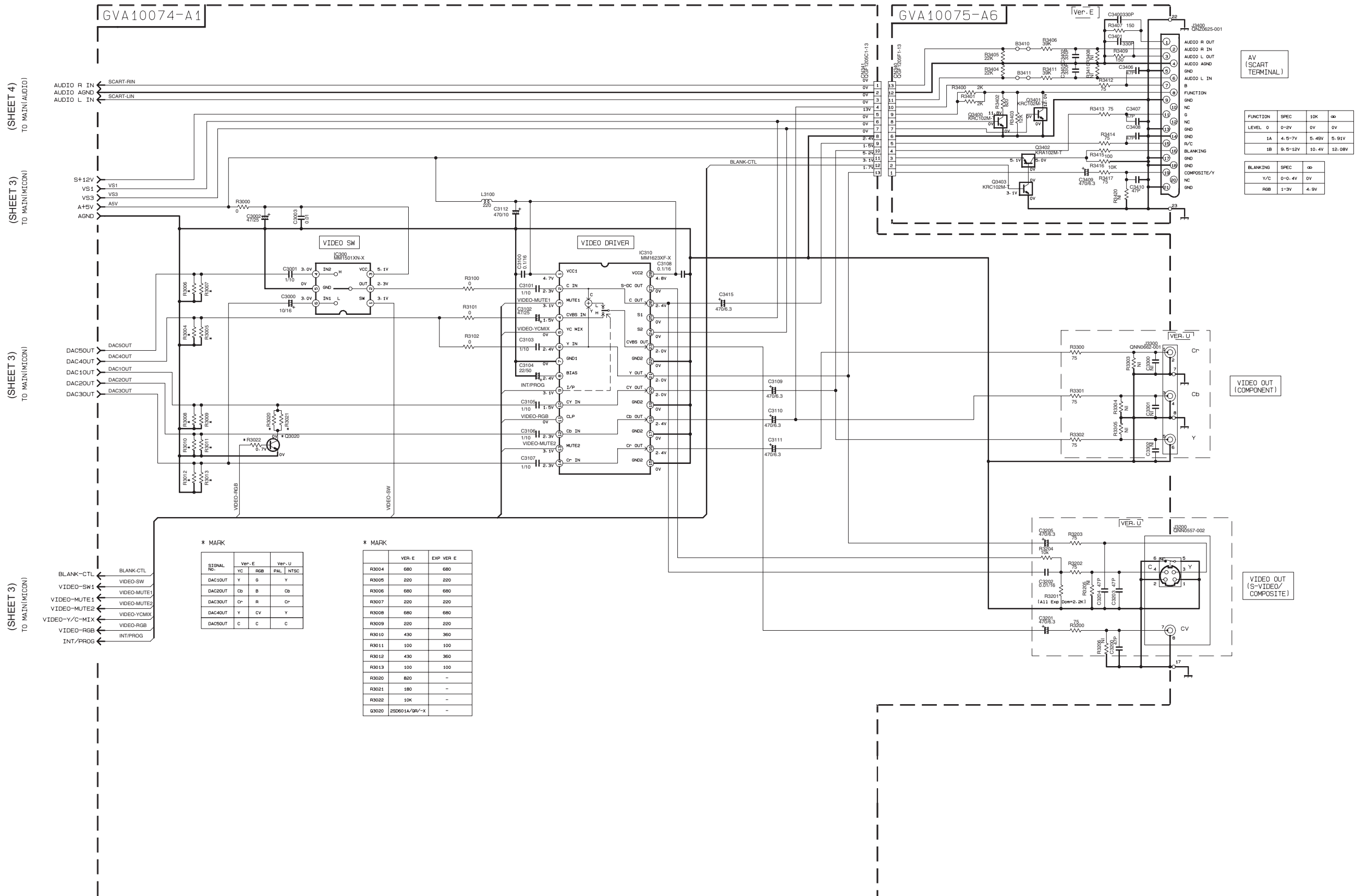


COMP	1	2	3	4	5	6	7	8	9	10	11	12	13	14	15	16	17	18	19	20	21	22	23	24	25	26	27	28	29	30	31	32	33	34	35
10200	0V	0V	0V	0V	0V	0V	0V	0V	0V	0V	0V	0V	0V	0V	0V	0V	0V	0V	0V	0V	0V	0V	0V	0V	0V	0V	0V	0V	0V	0V	0V	0V	0V	0V	0V
10201	0V	0V	0V	0V	0V	0V	0V	0V	0V	0V	0V	0V	0V	0V	0V	0V	0V	0V	0V	0V	0V	0V	0V	0V	0V	0V	0V	0V	0V	0V	0V	0V	0V	0V	0V
10202	0V	0V	0V	0V	0V	0V	0V	0V	0V	0V	0V	0V	0V	0V	0V	0V	0V	0V	0V	0V	0V	0V	0V	0V	0V	0V	0V	0V	0V	0V	0V	0V	0V	0V	0V
10203	0V	0V	0V	0V	0V	0V	0V	0V	0V	0V	0V	0V	0V	0V	0V	0V	0V	0V	0V	0V	0V	0V	0V	0V	0V	0V	0V	0V	0V	0V	0V	0V	0V	0V	0V
10204	0V	0V	0V	0V	0V	0V	0V	0V	0V	0V	0V	0V	0V	0V	0V	0V	0V	0V	0V	0V	0V	0V	0V	0V	0V	0V	0V	0V	0V	0V	0V	0V	0V	0V	0V
10205	0V	0V	0V	0V	0V	0V	0V	0V	0V	0V	0V	0V	0V	0V	0V	0V	0V	0V	0V	0V	0V	0V	0V	0V	0V	0V	0V	0V	0V	0V	0V	0V	0V	0V	0V
10206	0V	0V	0V	0V	0V	0V	0V	0V	0V	0V	0V	0V	0V	0V	0V	0V	0V	0V	0V	0V	0V	0V	0V	0V	0V	0V	0V	0V	0V	0V	0V	0V	0V	0V	0V
10207	0V	0V	0V	0V	0V	0V	0V	0V	0V	0V	0V	0V	0V	0V	0V	0V	0V	0V	0V	0V	0V	0V	0V	0V	0V	0V	0V	0V	0V	0V	0V	0V	0V	0V	0V
10208	0V	0V	0V	0V	0V	0V	0V	0V	0V	0V	0V	0V	0V	0V	0V	0V	0V	0V	0V	0V	0V	0V	0V	0V	0V	0V	0V	0V	0V	0V	0V	0V	0V	0V	0V
10209	0V	0V	0V	0V	0V	0V	0V	0V	0V	0V	0V	0V	0V	0V	0V	0V	0V	0V	0V	0V	0V	0V	0V	0V	0V	0V	0V	0V	0V	0V	0V	0V	0V	0V	0V
10210	0V	0V	0V	0V	0V	0V	0V	0V	0V	0V	0V	0V	0V	0V	0V	0V	0V	0V	0V	0V	0V	0V	0V	0V	0V	0V	0V	0V	0V	0V	0V	0V	0V	0V	0V
10211	0V	0V	0V	0V	0V	0V	0V	0V	0V	0V	0V	0V	0V	0V	0V	0V	0V	0V	0V	0V	0V	0V	0V	0V	0V	0V	0V	0V	0V	0V	0V	0V	0V	0V	0V
10212	0V	0V	0V	0V	0V	0V	0V	0V	0V	0V	0V	0V	0V	0V	0V	0V	0V	0V	0V	0V	0V	0V	0V	0V	0V	0V	0V	0V	0V	0V	0V	0V	0V	0V	0V
10213	0V	0V	0V	0V	0V	0V	0V	0V	0V	0V	0V	0V	0V	0V	0V	0V	0V	0V	0V	0V	0V	0V	0V	0V	0V	0V	0V	0V	0V	0V	0V	0V	0V	0V	0V
10214	0V	0V	0V	0V	0V	0V	0V	0V	0V	0V	0V	0V	0V	0V	0V	0V	0V	0V	0V	0V	0V	0V	0V	0V	0V	0V	0V	0V	0V	0V	0V	0V	0V	0V	0V
10215	0V	0V	0V	0V	0V	0V	0V	0V	0V	0V	0V	0V	0V	0V	0V	0V	0V	0V	0V	0V	0V	0V	0V	0V	0V	0V	0V	0V	0V	0V	0V	0V	0V	0V	0V
10216	0V	0V	0V	0V	0V	0V	0V	0V	0V	0V	0V	0V	0V	0V	0V	0V	0V	0V	0V	0V	0V	0V	0V	0V	0V	0V	0V	0V	0V	0V	0V	0V	0V	0V	0V
10217	0V	0V	0V	0V	0V	0V	0V	0V	0V	0V	0V	0V	0V	0V	0V	0V	0V	0V	0V	0V	0V	0V	0V	0V	0V	0V	0V	0V	0V	0V	0V	0V	0V	0V	0V
10218	0V	0V	0V	0V	0V	0V	0V	0V	0V	0V	0V	0V	0V	0V	0V	0V	0V	0V	0V	0V	0V	0V	0V	0V	0V	0V	0V	0V	0V	0V	0V	0V	0V	0V	0V
10219	0V	0V	0V	0V	0V	0V	0V	0V	0V	0V	0V	0V	0V	0V	0V	0V	0V	0V	0V	0V	0V	0V	0V	0V	0V	0V	0V	0V	0V	0V	0V	0V	0V	0V	0V
10220	0V	0V	0V	0V	0V	0V	0V	0V	0V	0V	0V	0V	0V	0V	0V	0V	0V	0V	0V	0V	0V	0V	0V	0V	0V	0V	0V	0V	0V	0V	0V	0V	0V	0V	0V

Parts are safety assurance parts.  
When replacing those parts make  
sure to use the specified one.

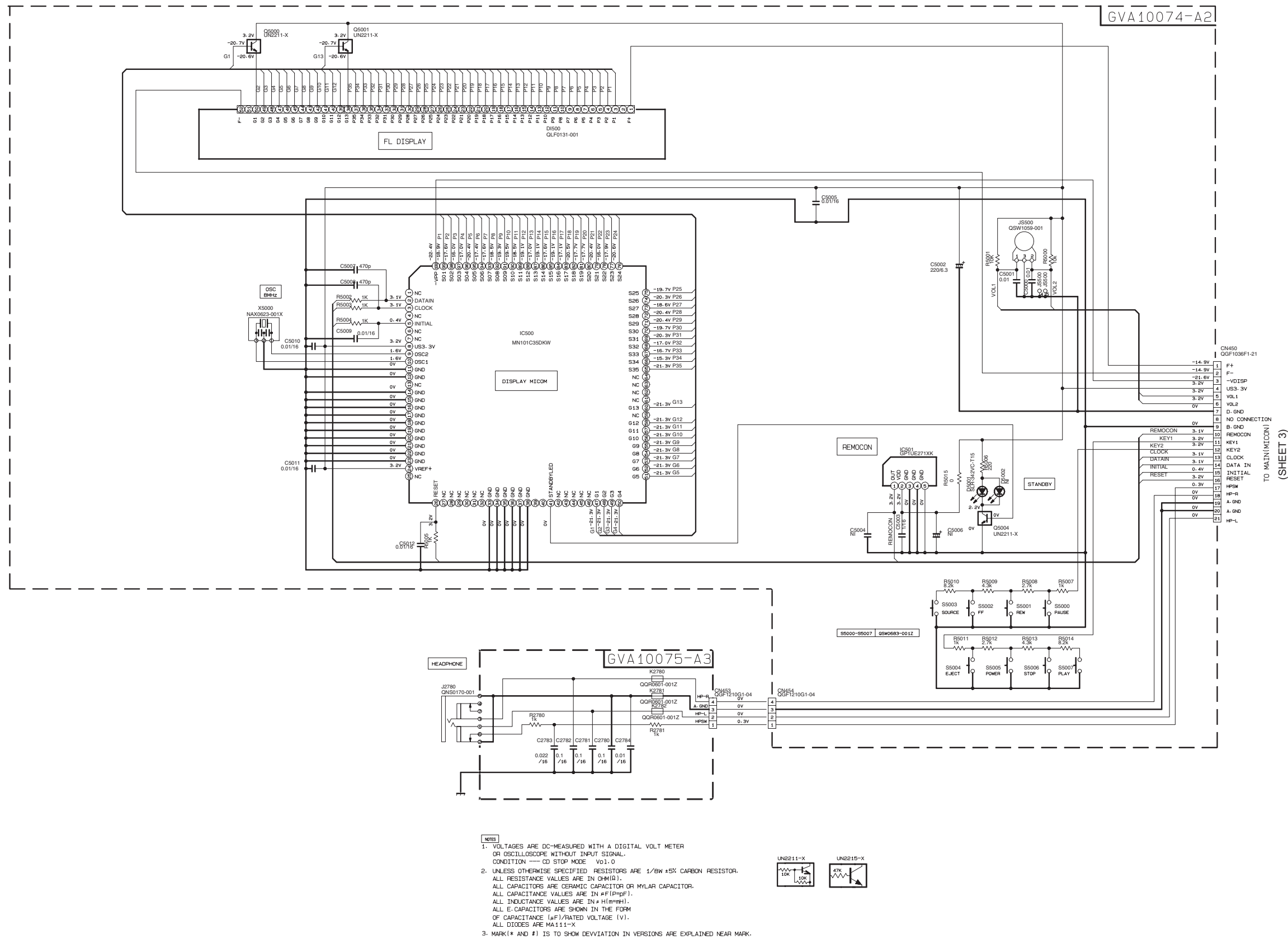


## ■ Video section





## ■ Front section





PICKUP ASS'Y  
GAL0507-001  
(HOP-1250J)

TRA MECHA ASS'Y

FEED MOTOR  
GAR0215-001

SPIINDLE MOTOR  
GAR0316-001

LVA10513-311A (1/2)

LASER DRIVER

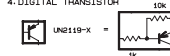
DRIVER

DV2.2

IC801  
M920500AAH

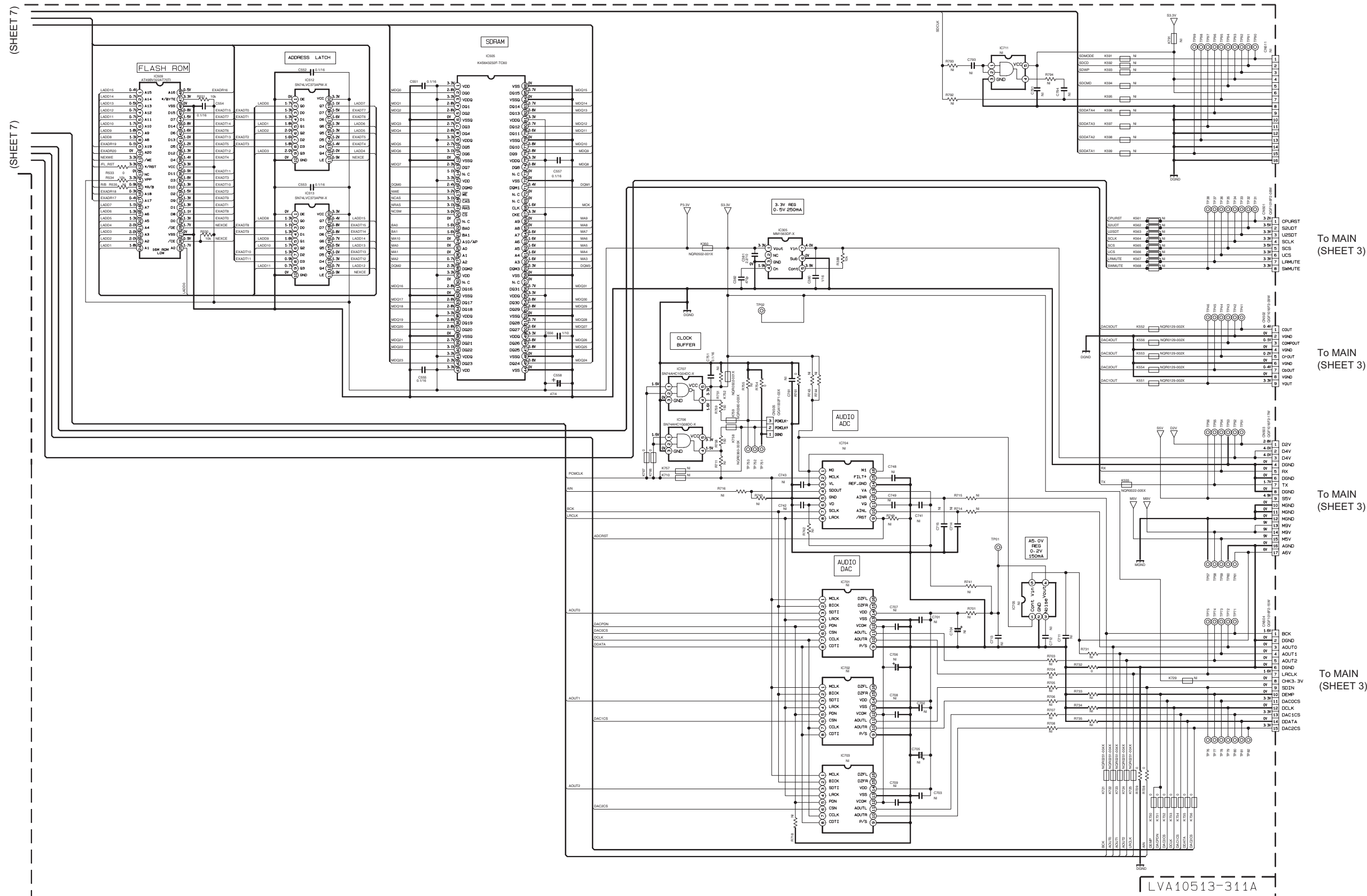
NOTES

- VOLTAGES ARE DC-MEASURED WITH A DIGITAL VOLT METER WITHOUT INPUT SIGNAL.  
CONDITION: DVD DISC IN MODE: DVD STOP
- UNLESS OTHERWISE SPECIFIED:  
ALL RESISTORS ARE 1/10W ±5% METAL GLAZE RESISTOR, OR 0.5% METAL GLAZE RESISTOR.  
ALL CAPACITORS ARE 50V or 25V CERAMIC CAPACITOR.  
ALL RESISTANCE VALUES ARE IN Ω(M).  
ALL CAPACITANCE VALUES ARE IN μF(PF).  
ALL CAPACITORS ARE SHOWN IN THE FORM OF CAPACITANCE(μF)/RATED VOLTAGE (V).  
ALL INDUCTANCE VALUES ARE IN mH(mH).
- NI STANDS FOR NOT INSERTED PARTS.
- DIGITAL TRANSISTOR





■ DVD servo section (2/2)



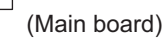
NOTES

1. VOLTAGES ARE DC-MEASURED WITH A DIGITAL VOLT METER WITHOUT INPUT SIGNAL.  
CONDITION: DVD DISC IN MODE: DVD STOP
2. UNLESS OTHERWISE SPECIFIED:  
ALL RESISTORS ARE 1/10W 5% METAL GLAZE RESISTOR, OR 0.5% METAL GLAZE RESISTOR.  
ALL CAPACITORS ARE 50V OR 25V CERAMIC CAPACITOR.  
ALL RESISTANCE VALUES ARE IN OHM(Ω).  
ALL CAPACITANCE VALUES ARE IN pF(pF).  
ALL E-CAPACITORS ARE SHOWN IN THE FORM OF CAPACITANCE(μF)/RATED VOLTAGE (V).  
ALL INDUCTANCE VALUES ARE IN μH(mH).
3. NI STANDS FOR NOT INSERTED PARTS.



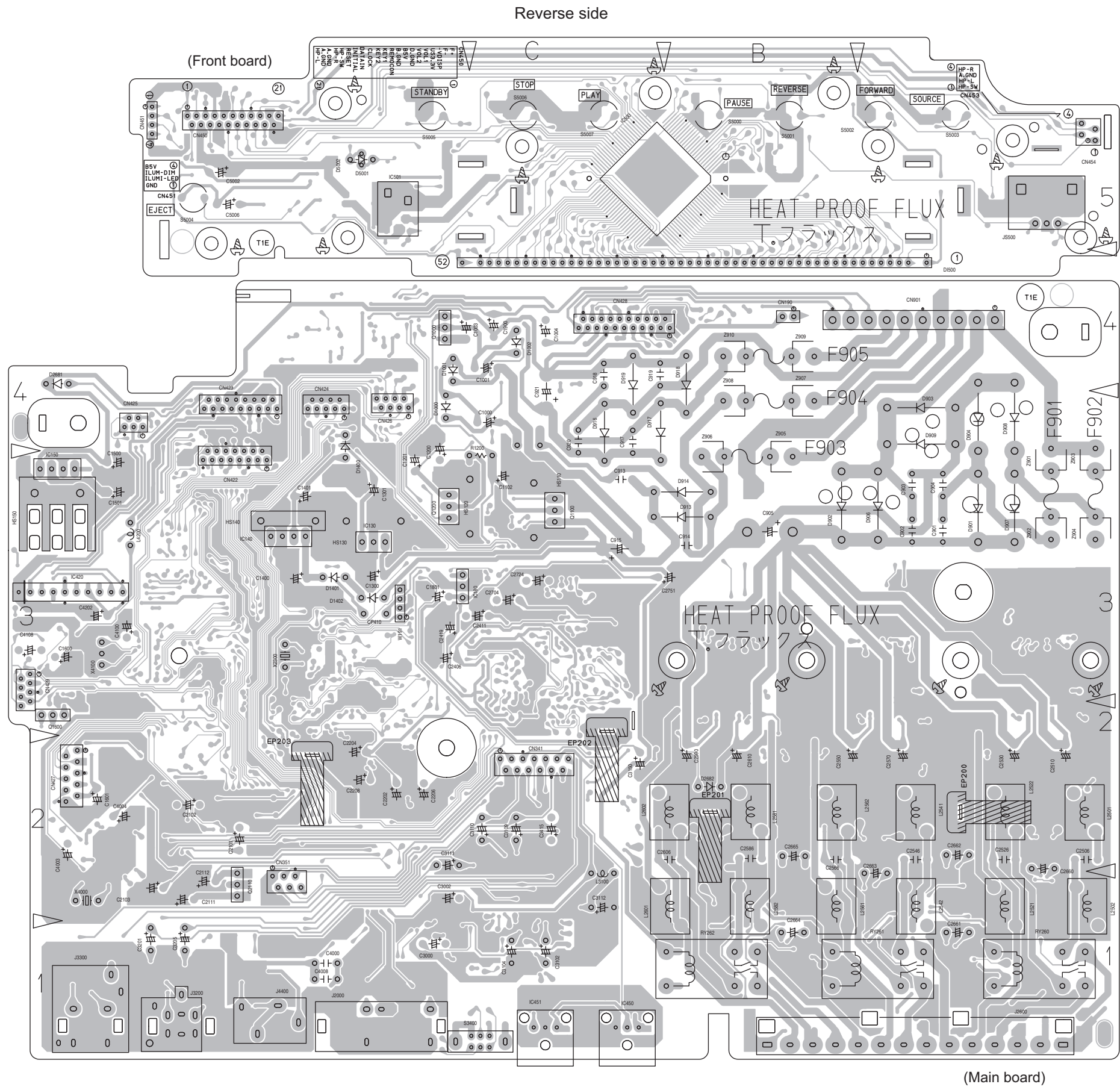
## ■ Main board (1/2)

(Front board)





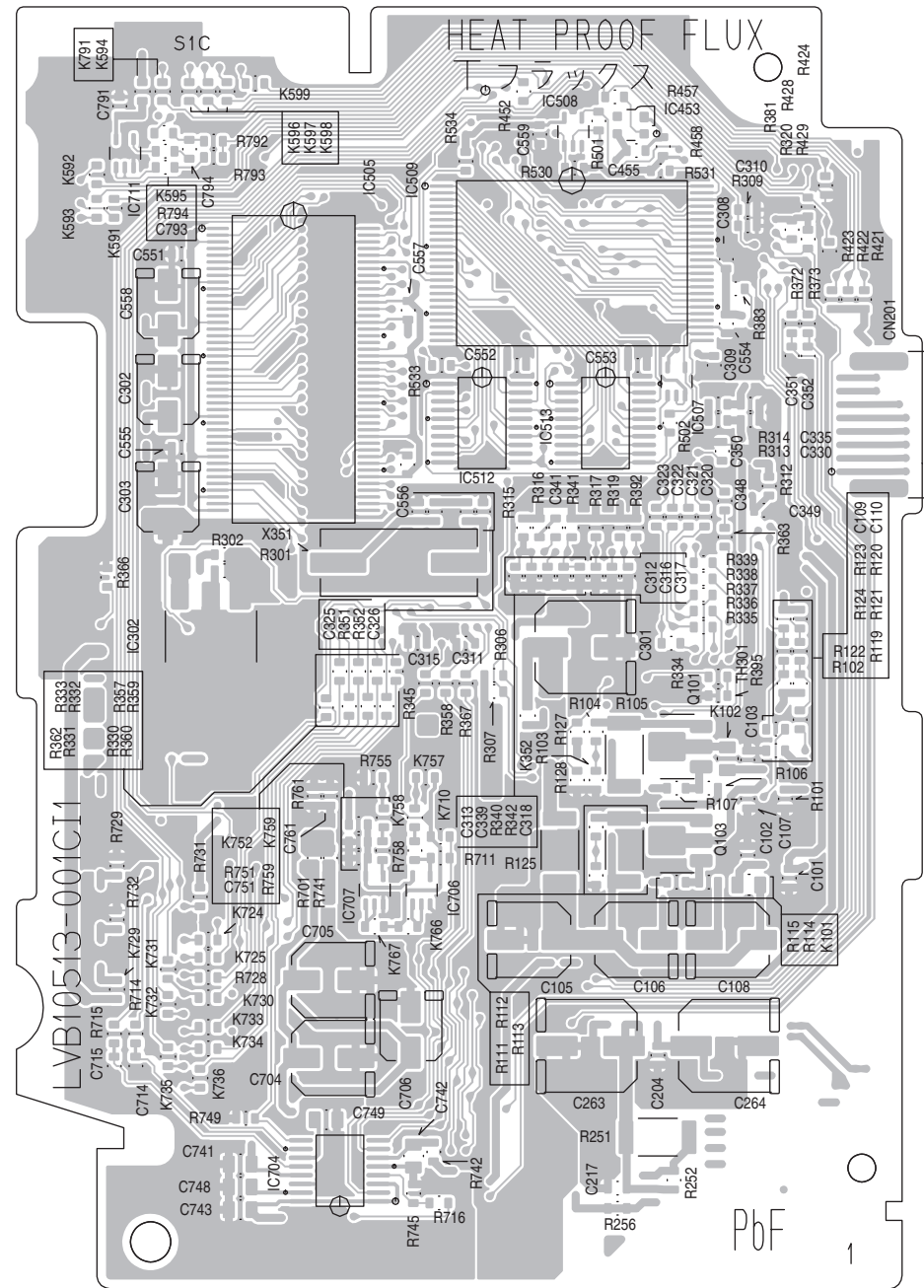
■ Main board (2/2)





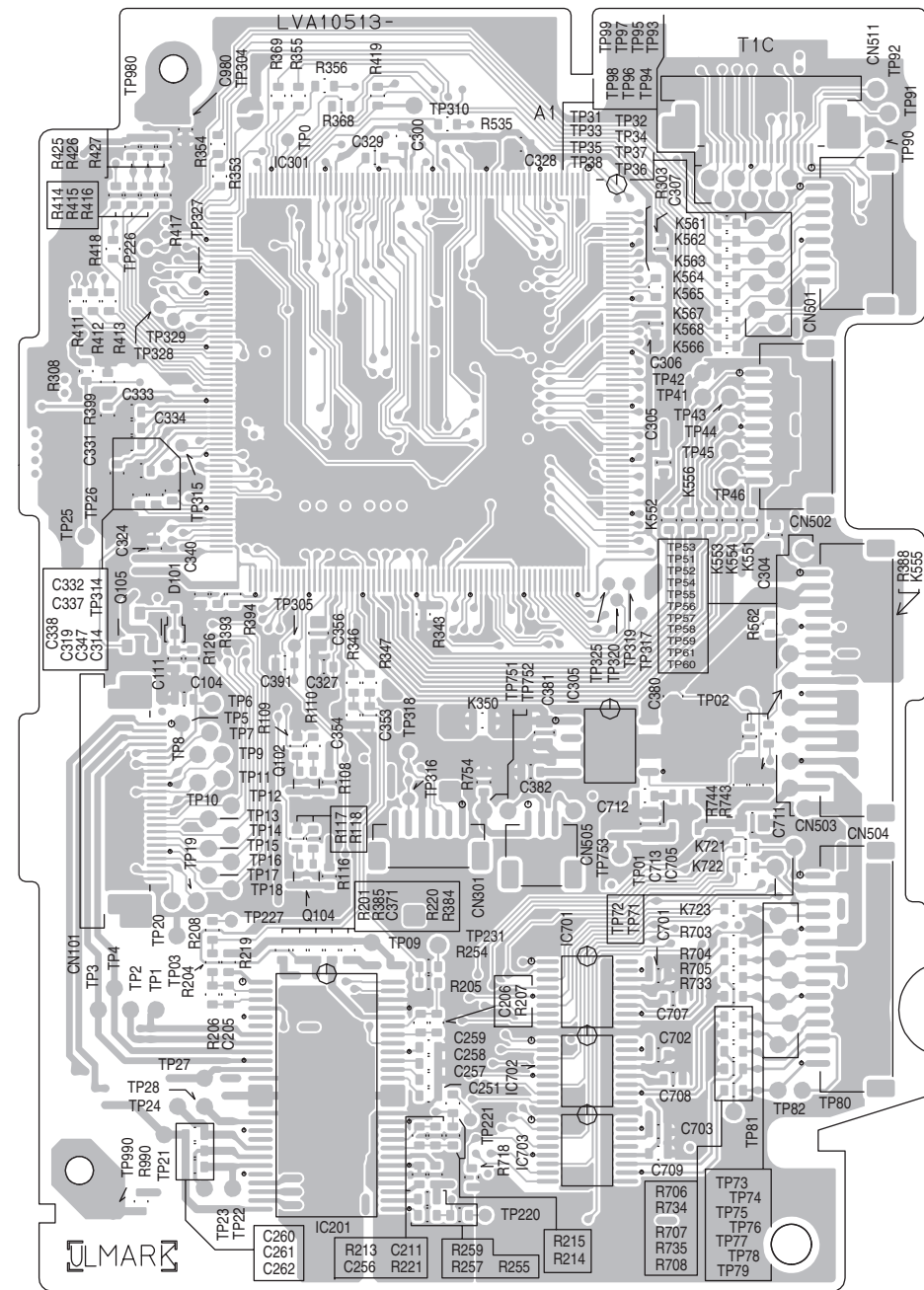
## ■ DVD servo board (1/2)

Forward side

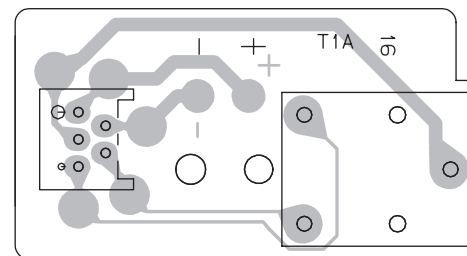


## ■ DVD servo board (2/2)

Reverse side



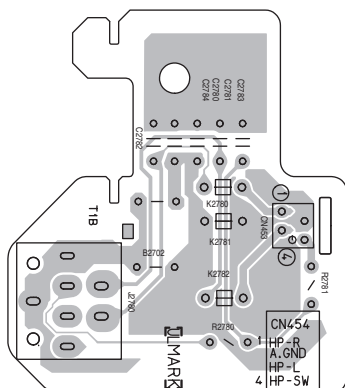
### ■ DVD loading switch board



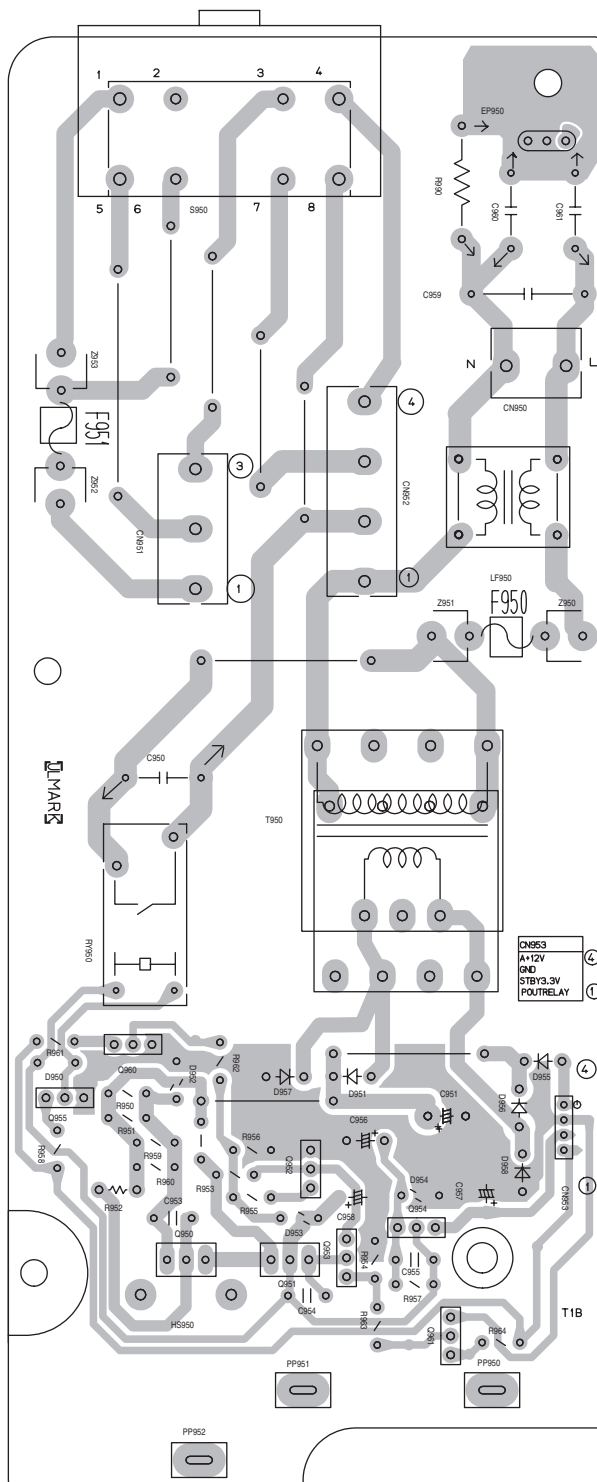


## ■ Trans boards

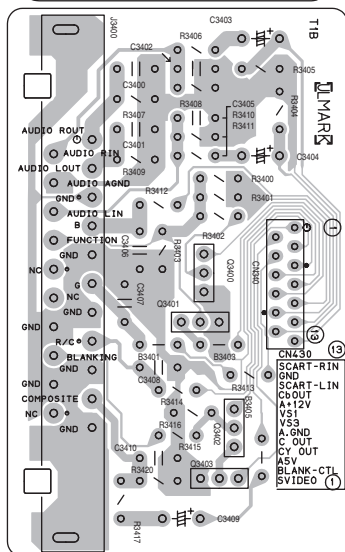
(HP terminal board)



(Transformer board)



(Scart terminal board)







Victor Company of Japan, Limited

AV & MULTIMEDIA COMPANY AUDIO/VIDEO SYSTEMS CATEGORY 10-1, 1chome, Ohwatari-machi, Maebashi-city, 371-8543, Japan

(No.MB305SCH)



Printed in Japan  
WPC